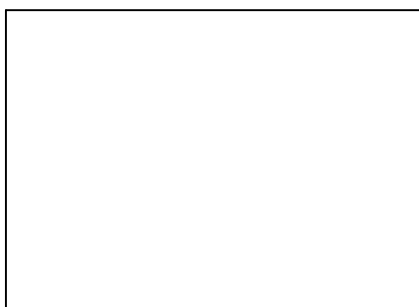
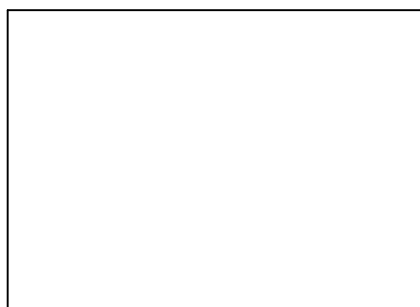
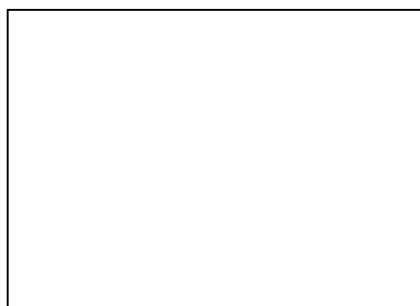
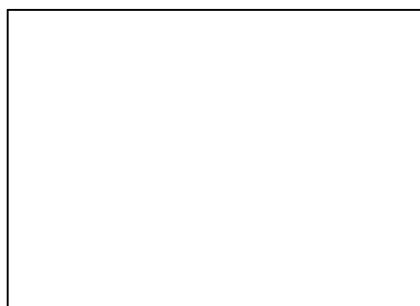




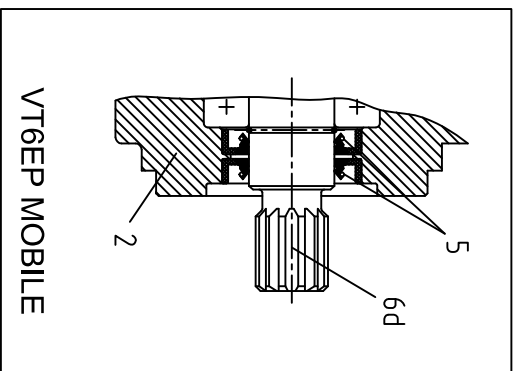
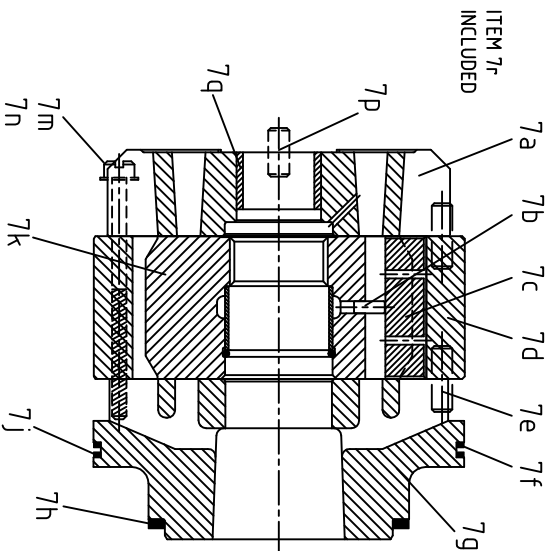
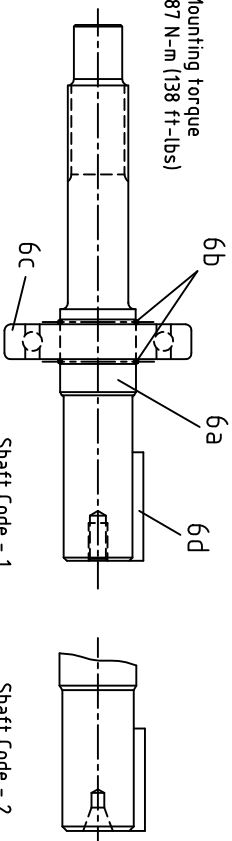
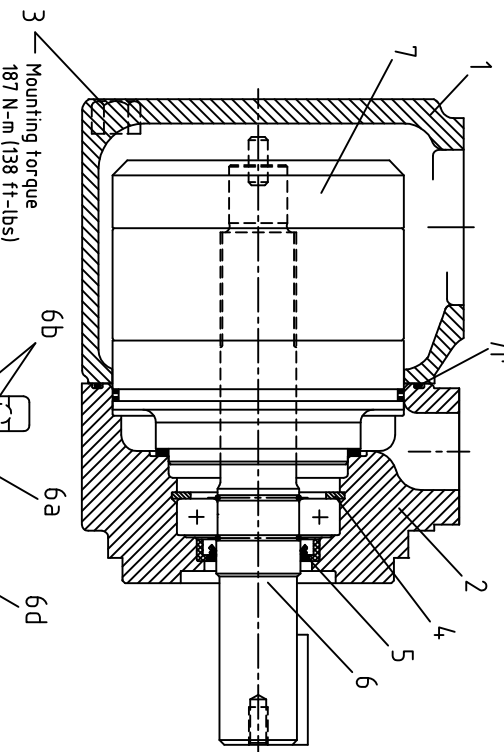
VT6E - VT6EM - VT6EP

Single vane pump



PHOTO

Bold printed are recommended repair kits and assemblies



Item pos.	Description	Part No.			Qty
		VT6E (Standard)	VT6E (Bi-dir plates)	VT6EM-0** VT6EP-0**	
1	Housing (UNC) Housing (Metric)	V034-70247 C-034-03055	V034-70247 C-034-03055	V034-70247 C-034-03055	1
2	Mounting flange (UNC) Mounting flange (Metric) Mounting flange (UNC) (VT6EP) Mounting flange (Metric) (VT6EP)	V034-70249 C-034-03056 C-034-03056 C-034-03057	V034-70249 C-034-03056 C-034-03056 C-034-03057	V034-70249 C-034-03056 H-034-66745 C-034-03057	1
3	Mounting Screw	V306-40159	V306-40159	V306-40159	4
4	Retaining ring	V356-30315	V356-30315	V356-30315	1
5	Shaft seal (S1-0.7 bar) Shaft seal (S1-0.7 bar) (VT6EP) Shaft seal (S4-S5-7 bar)	V620-82064 V620-82064 V620-82072	V620-82064 V620-82064 V620-82072	V620-82064 V620-82064 V620-82072	1 2 1



Shaft Code - 3 Shaft Code - 3 (VT6EP) Shaft Code - 4 Shaft Code - T

6	Shaft and bearing ass'y (Code-1) Shaft and bearing ass'y (Code-2) Shaft and bearing ass'y (Code-3) Shaft and bearing ass'y (Code-3) (VT6EP) Shaft and bearing ass'y (Code-4) Shaft and bearing ass'y (Code-T)	Part No.			Qty
		VS14-28174	VS14-28174	VS14-28174	
	Shaft (Keyed) (Code-1)	VS14-28174	VS14-28174	VS14-28174	1
	Shaft (Keyed) (Code-2)	VS24-49212	VS24-49212	VS24-49212	1
	Shaft (Splined) (Code-3)	VS14-28173	VS14-28173	VS14-28173	1
	Shaft (Splined) (Code-3) (VT6EP)			VS24-40001	1
	Shaft and bearing ass'y (Code-4)			VS24-00092	1
	Shaft and bearing ass'y (Code-T)			VS24-33622	1
	Shaft (Keyed) (Code-1)	V034-71076	V034-71076	V034-71076	1
	Shaft (Keyed) (Code-2)	V034-66890	V034-66890	V034-66890	1
	Shaft (Splined) (Code-3)	V034-71077	V034-71077	V034-71077	1
	Shaft (Splined) (Code-3) (VT6EP)			H-034-66123	1
	Shaft (Splined) (Code-4)	V034-53515	V034-53515	V034-53515	1
	Shaft (Splined) (Code-T)			V034-66703	1

Item pos.	Description	Part No.			Qty
		VT6E (Standard)	VT6E (Bi-dir plates)	VT6EM-0** VT6EP-0**	
6b	Round section ring	V034-70866	V034-70866	V034-70866	2
6c	Ball bearing	V230-03208	V230-03208	V230-03208	1
6d	Key [Code -1]	V034-70330	V034-70330	V034-70330	1
	Key [Code -2]	V034-49676	V034-49676	V034-49676	
7	Cartridge assembly *42 C.W.	VS24-49388	C-S14-01163	VS24-49392	1
	Cartridge assembly *42 C.C.W.	VS24-49389	C-S14-01164	VS24-49393	
	Cartridge assembly *45 C.W.	VS24-10177	C-S14-01165	VS24-40014	
	Cartridge assembly *45 C.C.W.	VS24-10178	C-S14-01166	VS24-40015	
	Cartridge assembly *50 C.W.	VS24-40645	C-S14-01167	VS24-40767	
	Cartridge assembly *50 C.C.W.	VS24-40766	C-S14-01168	VS24-40768	
	Cartridge assembly *52 C.W.	VS24-10179	C-S14-01169	VS24-40016	
	Cartridge assembly *52 C.C.W.	VS24-10180	C-S14-01170	VS24-40017	
	Cartridge assembly *57 C.W.	C-S14-72157	C-S14-01171	C-S14-72348	
	Cartridge assembly *57 C.C.W.	C-S14-72158	C-S14-01172	C-S14-72349	
	Cartridge assembly *62 C.W.	VS24-10181	C-S14-01173	VS24-40018	
	Cartridge assembly *62 C.C.W.	VS24-10182	C-S14-01174	VS24-40019	
	Cartridge assembly *66 C.W.	VS24-10183	C-S14-01175	VS24-40020	
	Cartridge assembly *66 C.C.W.	VS24-10184	C-S14-01176	VS24-40021	
Cartridge assembly *72 C.W.	VS24-40026	C-S14-01177	VS24-40022		
Cartridge assembly *72 C.C.W.	VS24-40027	C-S14-01178	VS24-40023		
Cartridge assembly *85 C.W.	VS24-58988	C-S14-01179	C-S14-71569		
Cartridge assembly *85 C.C.W.	VS24-58989	C-S14-01180	C-S14-71571		
7a	Port plate - rear C.W.	V034-59082		V034-59082	1
	Port plate - rear C.C.W.	V034-59083		V034-59083	
	Port plate - rear (Bi-dir)		C-034-03868		
7b	Pin vane holdout	V034-59161	V034-59161	V034-70259	12
7c	Vane	V034-59162	V034-59162	V034-59162	12
7d	Cam ring - 042	V034-66899	V034-66899	V034-66899	1
	Cam ring - 045	V034-59164	V034-59164	V034-59164	
	Cam ring - 050	V034-66744	V034-66744	V034-66744	
	Cam ring - 052	V034-59165	V034-59165	V034-59165	
	Cam ring - 057	C-034-03202	C-034-03202	C-034-03202	
	Cam ring - 062	V034-59166	V034-59166	V034-59166	
	Cam ring - 066	V034-59167	V034-59167	V034-59167	
	Cam ring - 072	V034-66736	V034-66736	V034-66736	
	Cam ring - 085	V034-67030	V034-67030	V034-67030	
	Dowel pin	V324-22016	V324-22016	V324-22016	2
7f	Back-up ring	V618-15018	V618-15018	V618-15018	1

Item pos.	Description	Part No.			Qty
		VT6E (Standard)	VT6E (Bi-dir plates)	VT6EM-0** VT6EP-0**	
7g	Port plate - pressure C.W.	V034-59159		V034-59159	1
	Port plate - pressure C.C.W.	V034-59160		V034-59160	
	Port plate - pressure (Bi-dir)		C-034-03867		
7h	Sq. section seal	V691-10237	V691-10237	V691-10237	1
7j	Sq. section seal	V691-10253	V691-10253	V691-10253	1
7k	Rotor-insert ass'y	VS24-10185	VS24-10185	VS24-30019	1
7m	Screw	V310-10340	V310-10340	V310-10340	2
7n	Lockwasher internal tooth	V348-10010	V348-10010	V348-10010	2
7p	Dowel pin	V323-82014	V323-82014	V323-82014	1
7q	Bush	V034-59901	V034-59901	V034-59901	1
7r	Sq. section seal	V671-10259	V671-10259	V671-10259	1
5	Seal kit (S1 - 0,7 bar)	VS24-10186	VS24-10186	VS24-10186	1
	Seal kit (S1 - 0,7 bar) (VT6EP)			VS24-33397	
7f, 7h	Seal kit (S4 - 7 bar)	VS24-10186-4	VS24-10186-4	VS24-10186-4	
7j, 7r	Seal kit (S5 - 7 bar)	VS24-10186-5	VS24-10186-5	VS24-10186-5	
7a	Port plate - rear and bush ass'y C.W.	VS24-10175		VS24-10175	1
7q	Port plate - rear and bush ass'y C.C.W.	VS24-10176		VS24-10176	
	Port plate - rear and bush ass'y (Bi-dir)		C-S14-72953		

* 0 - Standard
B - Bi-directional plates/Mobile
R - Mobile-spring assisted (on request)

--	--	--	--	--	--

MODEL CODE

VT6E * * - * 66 - 1 R 00 - A 1 *

Series _____

* M = Mobile _____

* P = Mobile with double shaft seal

(* omit for Industrial)

Y = Metric port connection, omit for UNC _____

Cam ring _____ Displacement _____ Cam ring _____ Displacement _____
in³/rev (cm³/rev)

042/B42/R42	= 8.07	(132.30)	057/B57//R57	= 11.02	(180.70)
045/B45/R45	= 8.70	(142.40)	062/B62/R62	= 12.00	(196.70)
050/B50/R50	= 9.67	(158.50)	066/B66/R66	= 13.00	(213.30)
052/B52/R52	= 10.00	(164.80)	072/B72/R72	= 13.86	(227.10)
			085/B85//R85	= 16.40	(269.80)

Select '0' for Standard and Mobile
Select 'B' for Mobile and Industrial bi-directional
Select 'R' for Mobile-spring assisted

Type of Shaft _____ Type of Shaft _____

Type of Shaft _____

VT6E
1 = Keyed (SAE -CC)
2 = Keyed (no SAE)
3 = Splined (SAE -C)
4 = Splined (SAE-CC)

VT6EM
1 = Keyed (SAE-CC)
2 = Keyed (no SAE)
3 = Splined (SAE -C)
4 = Splined (SAE -CC)
T = Splined (SAE J718c)

VT6EP
3 = Splined (no SAE)

Modification

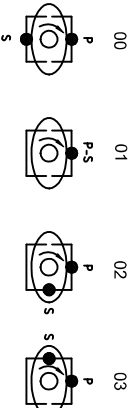
Seal class

- 1 = S1 - BUNA N
- 4 = S4 - EPDM
- 5 = S5 - VITON

Design letter

A = Industrial B = Mobile

Porting combination : (00 = Standard)



Direction of rotation

R = Clockwise

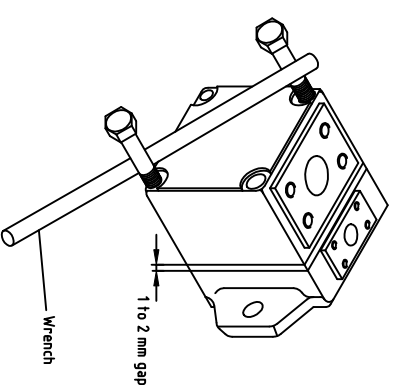
L = Counter - clockwise

To change porting position, follow the steps below:

Secure pump and remove 4 bolts from housing . Move the housing 1 to 2 mm away from mounting flange. Insert two bolts halfway in to the housing. Install a Wrench between the Two bolts and turn in the desired way,so that the required position of pressure port with respect to suction is obtained. Reinstall the bolts and tighten to corresponding mounting torque as provided on page 2

Instruction : Do not remove housing completely from the mounting flange but only just 1 to 2 mm to avoid the cartridge pin to move out from the housing dowel pin hole. Make sure no piece of paint enters in to the gap to avoid leakage.

If it is difficult to turn housing put some hydraulic oil in to the pressure port to lubricate the pressure port seals.



Veljan Hydrair Limited , Balanagar , Hyderabad - 500 037 , INDIA . Phone : ++91 40 3772794,95 FAX : ++91 40 3773963 , E-mail : info@veljan.com

Rights of alteration reserved

Print	_____
Replace	_____
Revision	_____

Printed in India